

S 47 SX

Truck-mounted concrete pump



Vertical reach		46.40 m
Concrete output	max.	162 m ³ /h
Pressure on concrete	max.	85 bar

MADE IN GERMANY
by SCHWING-Stetter 



RECORD BREAKING ENGINEERING

SCHWING GmbH
Heerstrasse 9-27
44653 Herne, Germ,any
Phone +98 021 - 224 286 75-8
Fax +98 021 - 224 286 78
@mr.pump_iran
www.saghargostar-co.ir

The S 47 SX from SCHWING

Proven reliability

With its robust design and proven concrete pumping technology, the S 47 SX from SCHWING stands since many years for reliability, long service life and excellent value retention. The open hydraulic system makes it possible to achieve an energy-saving engine speed of just over 1,000 U/min for customary delivery rates. In combination with the legendary robustness of the ROCK concrete valve, the operating and maintenance costs remain low and the revenue high. The lowest space requirement in this class when supporting makes erection possible even on the most restricted construction sites. The S 47 SX from SCHWING: Reliability and efficiency at the highest level.

Boom

The overhead roll folding boom enables an unrivaled speed of erection of the boom since it can be moved directly into the working position without having to slew it. On the other hand, the service life of the boom is long thanks to its proven and robust construction.



Pump kit

Only the SX outriggers by SCHWING allows the longstroke pump kit P2525 with 2.50 m long pumping cylinders to be used in this class of machine. Advantage: 15% less strokes than with pump kits otherwise available in this class.

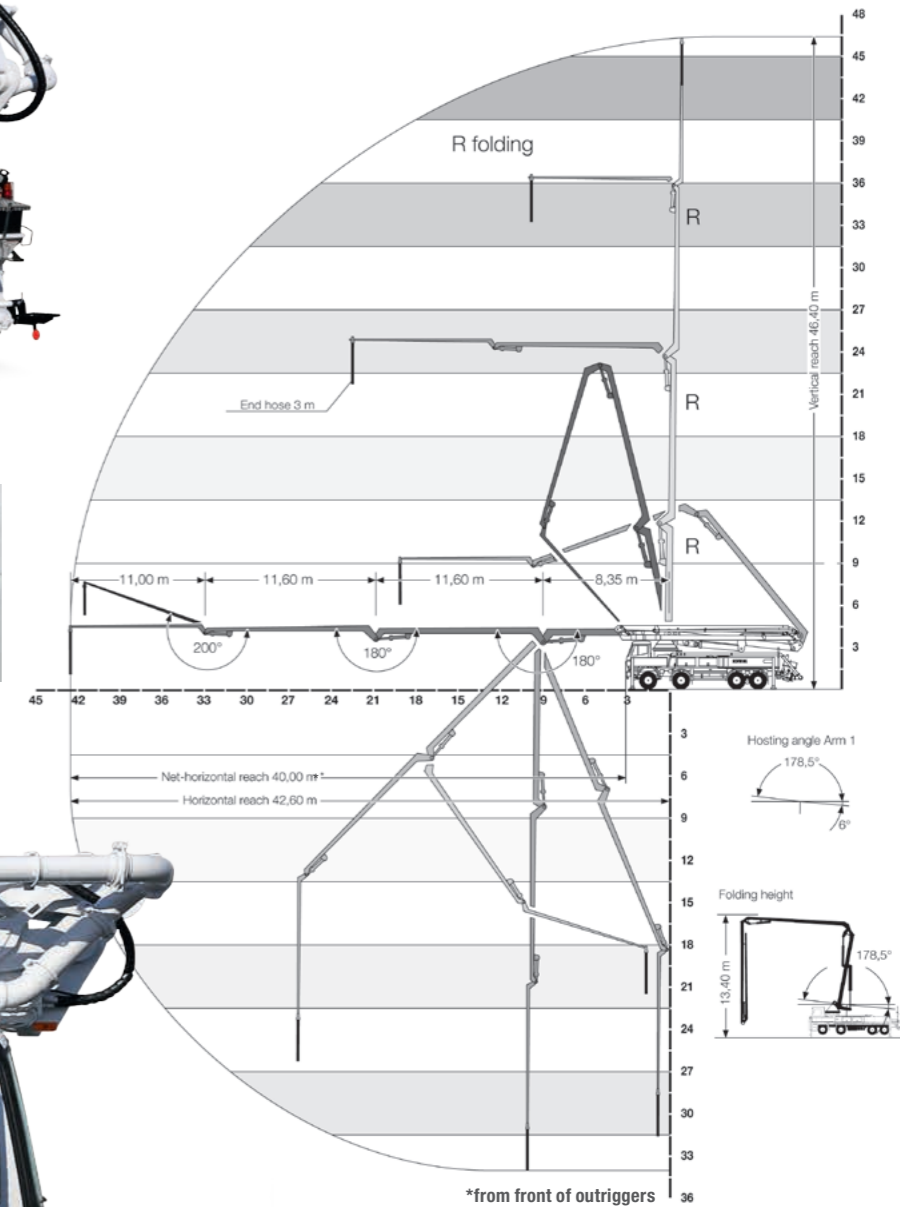


Open hydraulic system

The open hydraulic system of the S 47 SX converts the engine power efficiently into pump power with little loss. Thus, the usual practice output rates can be realized with a fuel-saving engine speed of just over 1000 rpm.



S 47 SX Truck-mounted concrete pump



Concrete valve

The legendary low wear ROCK valve with its optimal geometry for low-friction concrete flow ensures low service and operating costs. Being fast and easy to clean, the S 47 SX is quickly ready for the next job.



Supply control

The water box can be filled and emptied, and the water pump, agitator, spray hose, high pressure cleaner and compressor, all controlled via the standardised supply control. This is the standard for all SCHWING truck-mounted concrete pumps for greater clarity and ease of operation.



SCHWING GmbH
Heerstrasse 9-27
44653 Herne, Germ.any
Phone +98 021 - 224 286 75-8
Fax +98 021 - 224 286 78
@mr.pump_iran
www.saghargostar-co.ir

Remote control SC 30

The light weight, easy to use and comfortable SC 30 helps minimise fatigue, allowing the operator to focus on the job for extended periods. The powerful batteries guarantee an operating time of at least 8 hours.



SX outriggers

The SX outriggers developed by SCHWING combine high torsional rigidity and excellent stability with minimum space requirement. The protected piston rod and internally laid hydraulic lines prevent damage and reduce service costs.



Vector control

The machine operator can inspect machine data, operating conditions and settings on S 47 SX, changing various parameters, all through the intuitive VECTOR control. The integrated diagnostic system ensures safe operation and also reminds the operator when maintenance is necessary.

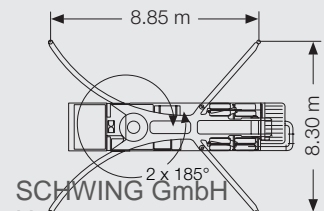


S 47 SX Truck-mounted concrete pump



Technical data

Performance				
Pump kit		P 2023-110/75	P 2023-110/75	P 2525-120/85
Drive	l/min	535	636	636
Delivery cylinders	mm	230 x 2,000	230 x 2,000	250 x 2,500
Concrete output max.	m ³ /h	136	161	162
Pressure on concrete max.	bar	85	85	85
Stroke rate max.	1/min.	27	32	22
Concrete valve		B-ROCK	B-ROCK	B-ROCK
Hydraulic system				
Design		open system		
Hydraulic tank	l	465		
Boom		47 R		
Delivery line		DN 125 (4 th boom section: DN 112; reduction in the 3 rd boom section)		
Length of end hose	m	3.00		
Vertical reach	m	46.40		
Reach depth	m	33.30		
Horizontal reach	m	42.60		
Net horizontal reach	m	40.00 (from front of outriggers)		
Number of boom sections		4		
Height of the inflexion points	m	5.90 / 14.20 / 25.80 / 37.40		
Slewing range		2 x 185°		
Folding height	m	13.40		
Support				
Outrigger width, front	m	8.30		
Outrigger width, rear	m	8.30		
Outrigger load, front	kN	260		
Outrigger load, rear	kN	250		



SCHWING GmbH
Heerstrasse 9-27
44653 Herne, Germany
Phone +98 021 - 224 286 75-8
Fax +98 021 - 224 286 78
@mr.pump_iran

www.saghargostar-co.ir
Stetter GmbH
Dr.-Karl-Lenz-Strasse 70 · 87700 Memmingen, Germany
Fon +49 83 31 - 78-0 · Fax +49 83 31 - 78 275
www.schwing-stetter.com · info@stetter.de

SCHWING concrete pumps. Efficiency as standard.



SCHWING
Stetter

SCHWING GmbH
Heerstrasse 9-27 · 44653 Herne, Germany
Fon +49 23 25 - 987-0 · Fax +49 23 25 - 72922
www.schwing-stetter.com · info@schwing.de